



**innov8**  
GROUP  
MASTERING TURKEY SOLUTIONS  
corporate profile





## MASTERING TURNKEY SOLUTIONS

Innov8 Group represents a group of companies that deliver turn-key interior services and consultation to a variety of clientele across the GCC. We offer a broad selection of specialized services including interior design, fit-out, furnishing, IT Communication and support services. These services add up to a comprehensive turn-key Design and Build solution.

We offer services to the following markets:

- Corporate End Users
- Retailers
- Residential End Users
- Property Developers/Building Owners

Innov8 Group offers global best practices solutions in relation to the design and build of interiors, managed through a project management framework that mitigates time frame and budget risk for the client. For example, our design services range from LEED accredited creative design, incorporating the latest in system furniture through to custom made furniture.

Innov8 Group's proven track record of delivering excellence to our enviable list of clients is the result of a rigorously tested business model built around global best practices.



# ABOUTUS



#### **PROFESSIONALISM**

We are committed to the highest standards of professionalism, we pursue innovation, we deploy imagination, we are open to new ideas and we act decisively and consistently. We are determined to deliver outstanding quality for each and every project.

#### **ACCOUNTABILITY**

Our corporate culture encourages all team members to take ownership over their respective roles, and to become an integral part of the systems and process that deliver excellence.

#### **INTEGRITY**

Our commitment to integrity is a cornerstone of our past, present and future success. This drives our dedication to uphold ourselves to the highest standards of business conduct.

#### **COMMITMENT**

We are persistent with a purpose in giving our client, supplier and fellow workers our total focus. We work to achieve continuous improvement in our processes and products through a commitment to quality principles and ensure quality in every customer interaction.

## **MISSION STATEMENT**

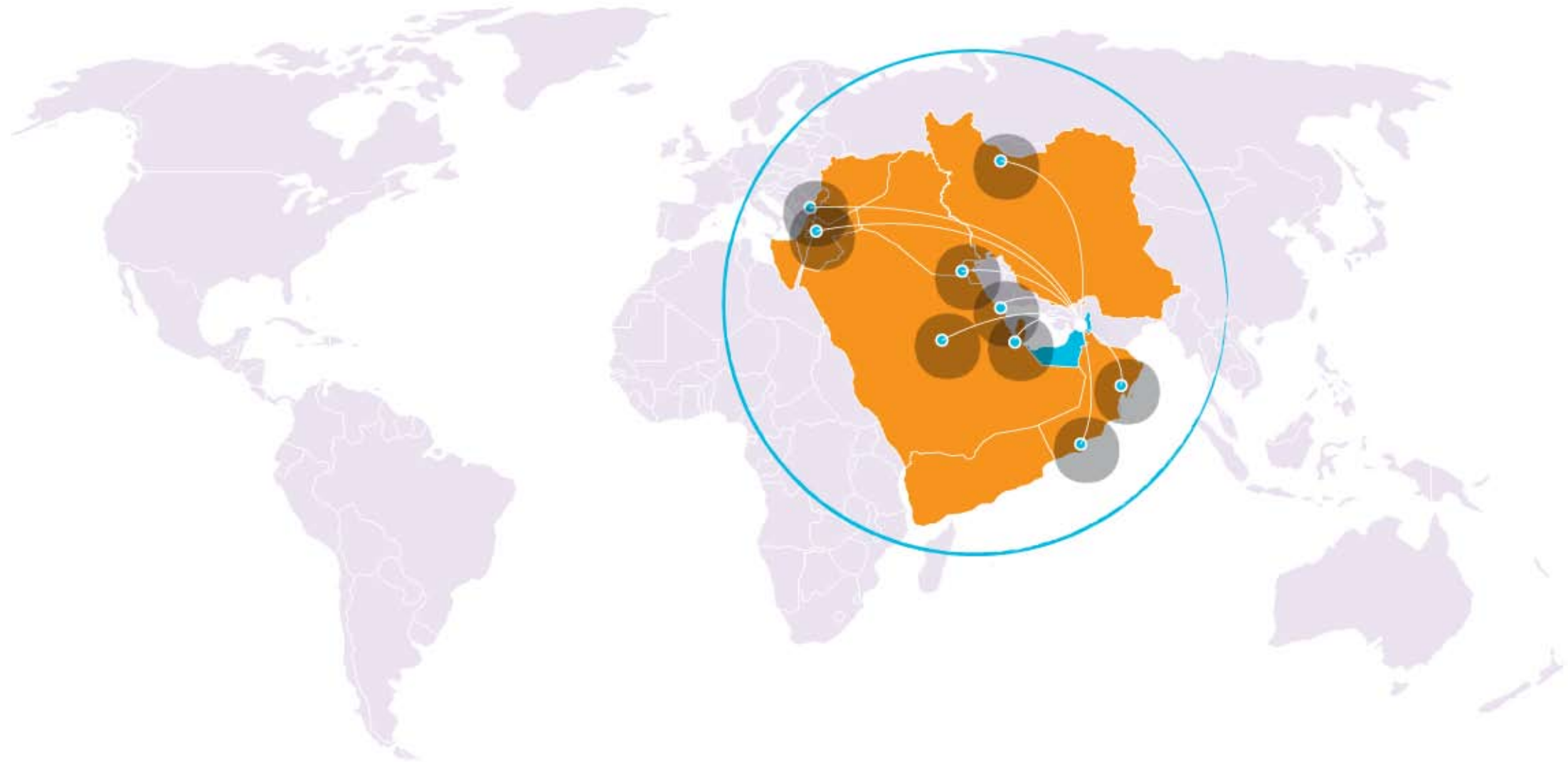
INNOV8 GROUP IS COMMITTED TO ACHIEVE EXCELLENCE IN EVERY ASPECT OF DELIVERING INTERIORS SOLUTIONS.

We strive to create environments that inspire, empower and revolutionize lives, workplaces and recreations of humanity. We aim to contribute significant value, not only to our clients but also to our employees and our community, through continual innovation, sustainable development and global best practice.

Over the past several years we have gained extensive knowledge for sustainable interior design while establishing a strong network of trades-people, builders and fabricators who share our vision. We endeavor to combine our creativity for design with our desire to help others enjoy life more through our strong commitment to the environment.

# GCCPRESENCE

INNOV8 GROUP, BASED IN THE UAE IS CAPABLE OF DELIVERING DESIGN & BUILD INTERIORS SERVICES THROUGHOUT THE BROADER GCC REGION.





## ACCELER8SERVICES

Acceler8 is a value added Innov8 project management service that identifies several alternative and unique time/cost solutions for a specific project program without compromising the quality of delivery. Accordingly, the project delivery can be tailored to specific time frames and/or cost requirements. Typically, costs rise substantially for projects with compressed time frames as additional resources are required in order to complete the project within a shorter than usual time frame.

TIME EFFECTIVENESS

COST SAVINGS STRATEGY

INNOV8 ACCELER8 SERVICES

ON TIME PROJECT DELIVERY



## Commercial Design and Build



**Innov8 Solutions**, a division of Innov8 Group, specializes in commercial and retail turn-key design and build interiors. A comprehensive interior tenancy service set up to provide interior design, project management consultancy and build services to building owners, property developers and business end users.

For any given design and build interiors project, our team of qualified designers, project managers and construction managers are accountable for the implementation of complete turn-key services, with all project details from initial conception phase to the final installation.

Our emphasis on budget management and scheduling of all activities ensures smooth and successful completion of all interior design projects exceeding client's expectations. We will oversee ordering and tracking of all products, coordinate our in-house contractors, delivery and installation of floor and wall coverings, furniture, light fixtures etc. and ensure proper maintenance of all objects that are needed for the space. Our goal is to create a unique and innovative solution that will be a perfect balance between functionality and aesthetics. We remain committed to providing the superior level of service to our clients even after project completion.

We commit an optimal allocation of resources to ensure project is delivered to your requirements, in fact, we are confident that our internal processes will guarantee delivery with preferred time frames and budget.

### **Our services include consultancy or turn-key solutions for:**

- >> Strategic Project Planning
- >> Client Brief Development
- >> Office Refurbishment/Office Design
- >> Office Interior Design Development
- >> MEP Integration and Coordination
- >> IT Integration and Coordination
- >> Cost Control and Budget Monitoring
- >> Project Management
- >> Construction Management
- >> Fixed Asset Management
- >> Office Furniture
- >> Ongoing Maintenance and Warranty





Renov8, the residential turn-key design and build division of Innov8 Group, provides a full range of design services and turn-key solutions for home owners, architects, and residential builders. Whether you are looking to design a specific room, an entire house, or even a larger project such as a community, Renov8 has the experience and creativity, along with our in-house designers and build team, to bring your vision to life, managing every step allowing us to control the quality, time frames and costs.



**renov8**  
*one stop home renovations*

#### Our Services Include:

- >> Conceptual Design Development
- >> Home Renovation/Remodeling
- >> Project Management and Supervision
- >> Functional Space Planning and Design
- >> Residential Analysis for Clients Lifestyle
- >> Trim & Molding Specifications
- >> Lighting Design
- >> Custom Lighting
- >> Color Schemes Based on the Psychology of Color
- >> Exterior Color Coordination
- >> Flooring
- >> Artificial Turf/Grass
- >> Structural Additions & Alterations
- >> Pergola and Awning Construction
- >> Garden Landscaping
- >> Outdoor Furniture & Feature Selection
- >> Outdoor Tiling, Painting & Detailing
- >> Full Scope of Exterior Customized Needs
- >> Custom Area Rugs
- >> Furniture
- >> Custom Furniture Design and Manufacturing
- >> Unique Custom-Designed Window Treatments
- >> Specification of Interior Finishes
- >> Specialized Wall Treatments - Faux
- >> Painting/Murals
- >> Wallcoverings
- >> Artwork and Accessory Selection and Placement
- >> Audio Visual Home Theatres
- >> Layout Planning including Feng Shui
- >> Colours, Finishes & Furniture Selection
- >> Style and Theme Creation
- >> Overall customization to create a unique and tailored living environment
- >> 3D Vizualization of completed project

## Residential Design and Build





## Furniture Solutions

Configur8, the furniture division of Innov8 Group, offers a comprehensive line of products focused on enhancing productivity, saving space and significantly improving the ergonomic and aesthetic conditions within the workplace and home.

Working alongside Innov8 Solutions and Renov8, we provide space planning consultations to maximize your living or working place and ergonomic evaluations to ensure the comfort and safety of you and others around you.

Being the main distributor of internationally renowned furniture brands such as Mobilinea, Matsu and Sunon, we offer a range various of furniture options that fits all budgets. We also offer direct access to global system furniture manufacturers such as Herman Miller, Teknion, Haworth and Steel Case. By sourcing FF&E directly from these and other manufacturers, this enables us to pass substantial savings on to our clients.

Configur8 implements a stringent pre-qualification process for the ranges of furniture we distribute, ensuring quality and after-sales support are not compromised.

We offer Furniture, Furnishings and Equipments (FF&E) for:

- >> New Home Buyers
- >> Landlords and Letting Agents
- >> Tenants
- >> Loss Adjusters
- >> Residential Developments
- >> Hotel Apartments
- >> Commercial Offices
- >> Retail Outlets
- >> Developers and Builders





## General Contracting



Group8 Contracting, a division of Innov8 Group, is a dedicated commercial and residential construction company which supports Innov8 Solutions and Renov8. Having been in the construction industry for many years, Group8 has has been providing high-quality construction services with our experience and resources to take on your construction project.

Attention to detail and hands-on management is the Group8's philosophy and is the main reason behind our continued success. From commercial to residential projects let us deliver you a product with the time-honoured style, cutting-edge amenities, and most importantly the overall value you've been looking for.

As a general interiors contractor specializing in the design-build approach for residential, light industrial and commercial projects, we have extensive experience with all phases of conventional construction techniques.

The three primary reasons for implementing the design-build approach are:

**Quality Assurance** - Our team of labourers, equipped with the latest tools, supervised and trained by qualified tradespeople allow us to deliver an unparalleled level of finishing in every aspect of the project entrusted to us.

**Cost Savings** - "Value Engineering," which is the practice of seeking cost reduction and more efficient project schedules by evaluating alternative designs and materials, allows us to apply these recommendations on an ongoing basis when we are able to work with the designers on a team basis throughout the project.

**Single-Source Responsibility** - This allows the owner to work with one entity who is responsible for completing a successful project. The owner is able to focus on defining their needs and making decisions, rather than coordinating the activities of the designer and builder.

### Civil Works:

- >> Office Partitioning
- >> Refurbishments
- >> Suspended Ceilings
- >> Floor Coverings
- >> Structural Alterations
- >> General Maintenance
- >> Custom Remodelling
- >> Room Extensions
- >> Kitchen & Bath
- >> Restorations
- >> Garages, Gazebos, Decks
- >> Basement

### MEP Contracting:

- >> Mechanical Works
- >> Electrical Works
- >> Steel Cladding
- >> Drain Installation
- >> Structural Steelwork
- >> Plumbing Works
- >> General Building Works





## IT Solutions

**Techno8 supports both Innov8 Solutions and Renov8 in the turn-key Information Technology solutions for your commercial and residential spaces. Whether you are new to us or are looking for some initial guidance or you're a long term customer of ours, or just looking for proactive consultation on how you can use technology to improve you business functions, we are happy to provide consultancy whenever you require it.**

**The convergance of the latest technology and communication, handled by a team of professionals allow us to synergize the business and home, improving communication effectivenesss. Our products are sourced directly from the manufacturer and are installed by our highly skilled hardware and software technicians. Members of our IT team are certified by the major IT suppliers.**

### **Techno8 commercial solutions can incorporate:**

- >> **Servers**
- >> **PCs**
- >> **Networking**
- >> **Virtual Servers and Off-Site Backup**
- >> **A/V Solutions**
- >> **PABX/IP Telephony Systems**
- >> **Structured Cabling**

### **Techno8 home solutions can incorporate:**

- >> **Dimmers, Lighting & Appliance Control**
- >> **Door Locks & Access Control**
- >> **Intercom & Phones**
- >> **Solar & Energy Savers**
- >> **Speakers, A/V & Home Theatre**
- >> **Thermostats & HVAC Controls**
- >> **Timers & Automation**
- >> **Remotes & IR Repeaters**
- >> **Security**
- >> **Smart Home Systems**



## YOUR BENEFITS

### ONE STOP SHOP - TURN-KEY INTERIORS

Our end to end value added component services allow our clients to have the confidence that their project is in expert hands of our in house designers, project managers, site managers and other qualified professionals.

### QUALIFIED PROFESSIONALISM

Our team consists of expert qualified professionals in design, consultancy and project management dedicated to serve you better. We are empowered to deliver a seamless service to our clients which is demonstrated by our enviable track record of project delivery.

### GUARANTEES

We tailor our services to our client's requirements and specifically in respect to quality expectations, budget and time frame of project delivery. In fact, we are so confident of deliverables that we guarantee project quality and time frame delivery to our clients. A further commitment to our clients is demonstrated through our after-sales service.

### QUALITY ACCREDITATION

Our internal structure and processes ensure that our quality assurance extends beyond ISO accreditation. Our risk management protocols ensure that our clients expectations for quality standards are always exceeded.

### TRACK RECORD

Our experience is in delivering services to a range of clients within various industry sectors including our exemplary client list of global multi-nationals, government departments and small companies, thus allowing us to claim our expertise in delivering excellence within given time frame and budget.

### PROCUREMENT

Our supply chain procurement strategy involves sourcing directly from manufacturers enabling substantial cost savings to be passed on to our clients without compromising quality and after-sales support throughout the whole life-cycle of each project.

- 1. Meeting to define fit-out requirements and client objectives**  
Innov8 prepares concept space layout/test fit
- 2. Client presented with space layout and quotation for full design brief and tender services**  
Client appoints Innov8 through Letter of Intent to proceed with finalization of Design Brief
- 3. Innov8 prepares full design brief for tender. Final plans approved by client and submitted to landlord and statutory authorities for approval**  
All statutory and other approvals received
- 4. Tender package prepared and submitted to Innov8 suppliers**
- 5. Tendering stage finalized into turn-key package and submitted to client with contract including payment plan**  
Client appoints Innov8 through Contract to deliver the fit-out
- 6. Coordination of Project Management with regular updates and site visits with client**  
Practical completion certificate issued, final checks
- 7. Relocation of furniture and equipment**  
Total integrity test phase, prior to warranty defects by Innov8
- 8. Certificate of occupation**  
Formal hand over of tenancy to client



# TURNKEY PROJECT FITOUT MANAGEMENT

We create professional environments through our nationwide design and build service. All aspects of interior refurbishment are provided including demolitions, partitioning, ceilings, floors and finishes to electrical, mechanical, IT and data services.



## A UNIQUE APPROACH

Our unique single fee approach, which covers design, management and installation provides best value and is tailored to your individual budget and organizational needs. All without hidden costs.

## AN INTEGRATED TURN-KEY SERVICE

We provide a complete turn-key design and build service. This ensures speed, efficiency and a seamless coordination between our trades. Our clients are provided with a full schedule of works that identifies each individual task and when it will be completed. This plan and timetable will keep you fully informed of all the works and cash flow associated with your project.

## CONTRACTOR ONLY

Alternatively, we can operate solely as Contractors, pricing and carrying out works designed and managed by others, whether for a complete fit-out project or just a single element of it.

## HEALTH & SAFETY

We understand, and provide solutions to your legal obligations, identifying risk, responsibility and ensuring compliance. We have a professional Health, Safety and Risk Management advisory and implementation service, which includes the various legal and statutory requirements. This includes CDM (Construction, Design & Management), Planning Supervision, Risk and Hazard Assessment.

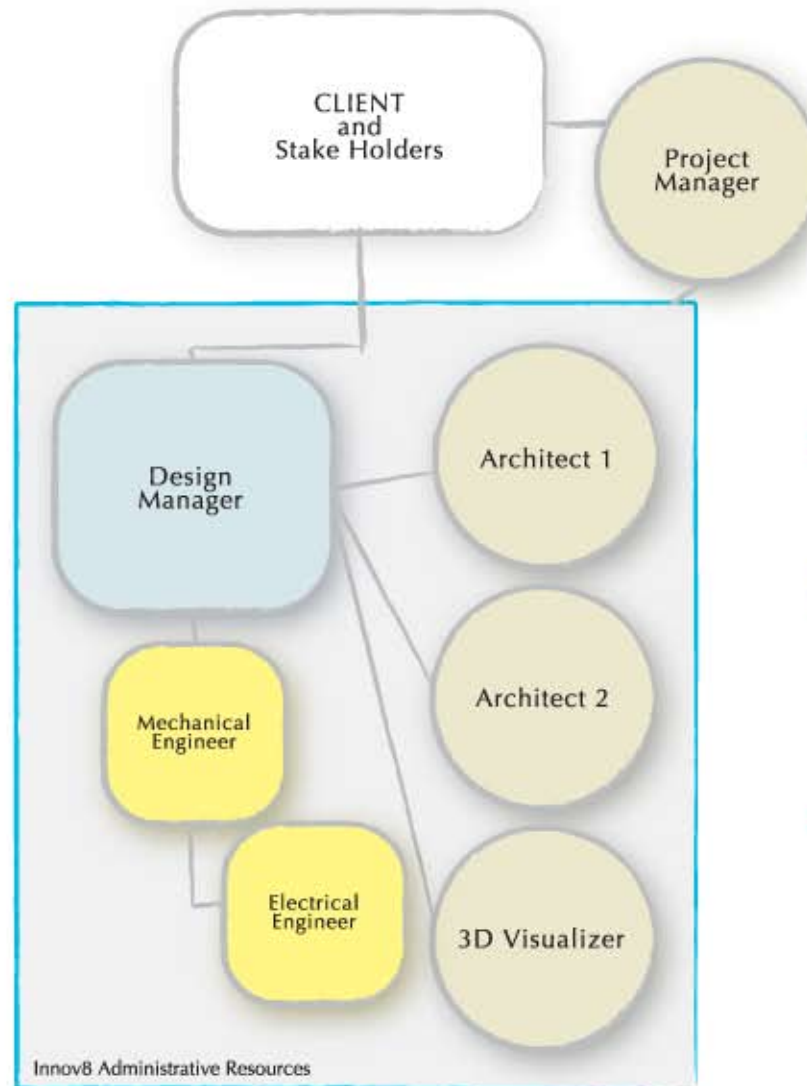
## PROFESSIONAL

Our team of in-house professionals possess the technical and practical knowledge to provide a fully comprehensive turn-key service from design and inception, through to completion of works. Our independence enables us to cost-effectively source all materials, specialist labour, fixings and fittings to achieve best value for our clients without compromise.

# TEAM STRUCTURE

## DESIGN DEPARTMENT

For the majority of our fit-out projects Innov8 Group Design Department provides key staff within our Design Team supported by Innov8 Group Admin Resources to deliver a full design package for the client. Furthermore, our Project Manager assumes responsibility for the project towards finalization the concept design stage ensuring a seamless transition phase to the pre-construction.



### DESIGN MANAGER

The Design Manager ensures that all design facets of the project including the Client's aims and objectives are achieved.

### ARCHITECT

Responsible to the Design Manager for execution of client design parameters. The Architect reports directly to the Design Manager and Project Manager ensuring that all drawings are prepared accurately and in the format to be accepted by statutory authorities.

### 3D VISUALIZER

Responsible for rendering 3D perspectives detailing completed concepts.



# TEAM STRUCTURE

## PROJECT MANAGEMENT

For the majority of our fit-out projects Innov8 Group provides key staff supported by Innov8 Group Administration Resources.

### PROJECT DIRECTOR

The Project Director ensures that all facets of the project including the Client's aims and objectives, timely delivery budget targets are achieved.

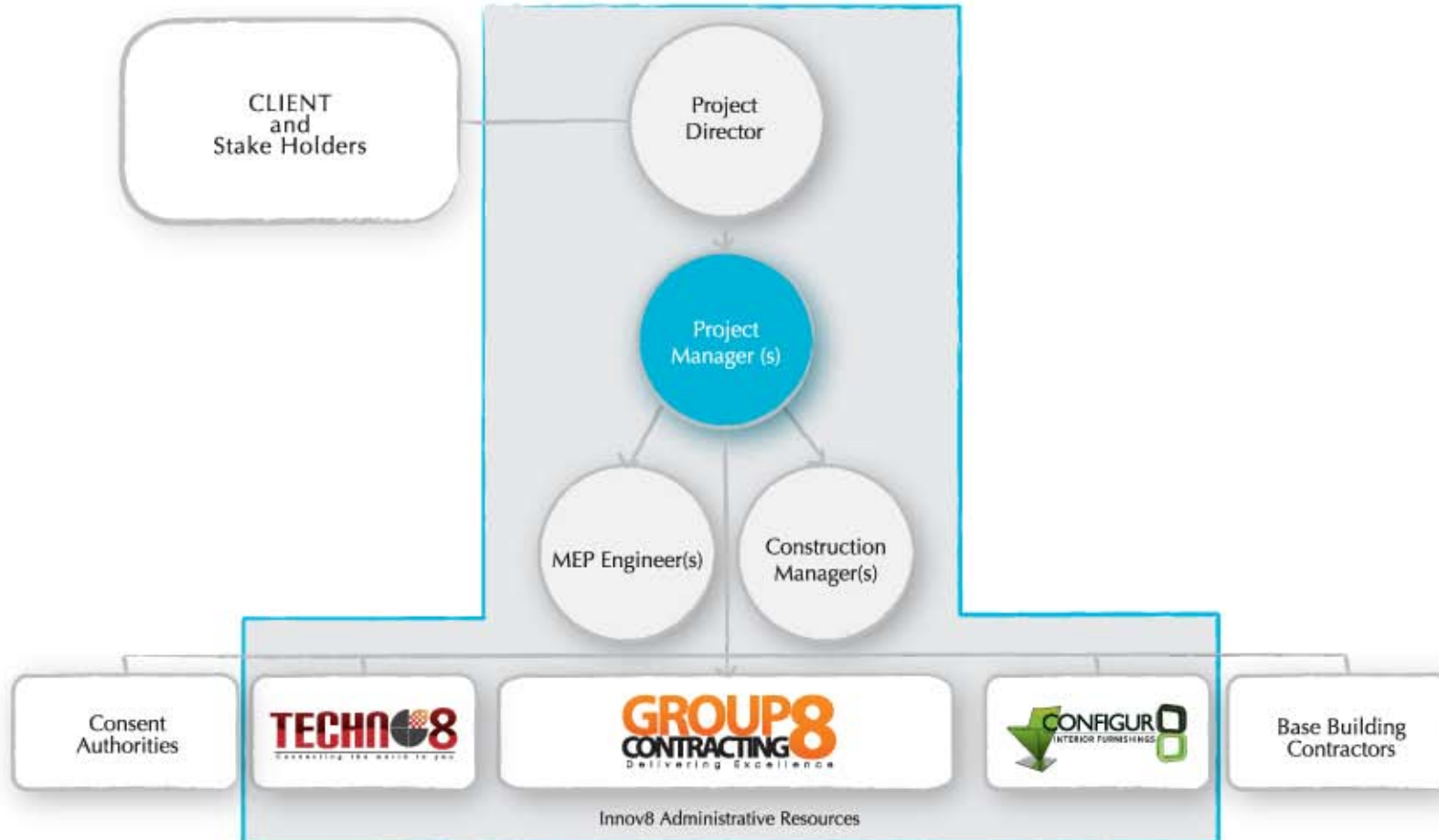
### PROJECT MANAGER

Responsible to the Project Director, Clients and Stakeholders. The Project Manager reports directly to the Project Director, Clients and Stakeholders and ensures that all costs, contracts and documentation is prepared in such a manner that the Client is protected before, during and after completion of the project.

### CONSTRUCTION MANAGER

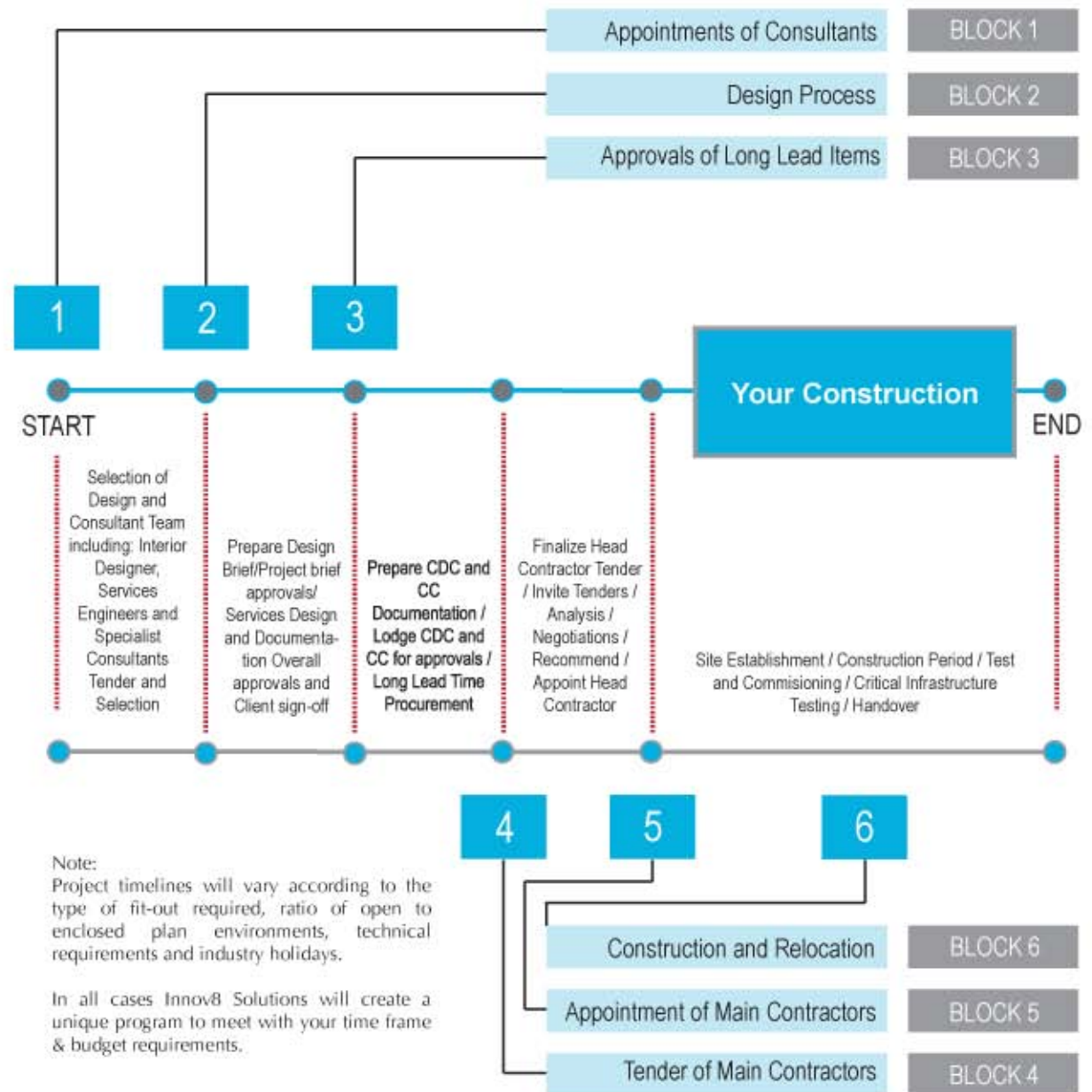
Responsible for the site supervision, coordination and timely progress of subcontractor work, reporting regularly to the Project Manager. ensures quality and integrity is maintained to exemplary standards.

**innov8**  
GROUP  
MASTERING TURNKEY SOLUTIONS



# PROJECT PROCESS MAP

## PROJECT CONSTRUCTION MANAGEMENT





# SUSTAINABILITY

As the concern for the availability of natural resources and living in a healthy environment increases, so has the interest in sustainable design and construction that reduces the use of non-renewable resources while improving a building's performance. **Innov8 Group Green Design** is design that goes beyond being just efficient, attractive, on time and on budget. It is a design that cares about how such goals are achieved, about its effect on people and on the environment. An environmentally responsible professional makes a commitment to constantly try to find ways to enhance the world around us. It is also a smart way of doing business: sustainable design is the fastest growing segment of our industry. We strive to promote healthy environment through sustainable design, providing an increase in productivity over longer terms.

Innov8 Group also aims to develop a sustainable workplace, living and construction environment. This includes internal programs for recycling and education to efficiency and sustainability policies that are setting the bar within the construction industry.





# LEEDing THE INDUSTRY

Leadership in Energy and Environmental Design (LEED®) is the “nationally accepted benchmark for the design, construction, and operation of high performance green buildings.” Our LEED® Accredited Professionals have proven experience in navigating the client and project team successfully through the LEED® Certification process.

In order to achieve LEED® Certification, buildings must meet stringent design and construction guidelines, with which Innov8 Group is very familiar having been awarded certification on many projects. Innov8 Group’s commitment to green construction through early adoption and ongoing education on emerging techniques and products has resulted in buildings that are in sync with the environment as well as the client’s needs.





# ACCREDITATION

Innov8 Group values the benefits of ISO accreditation.

ISO 9001 is a quality management system for any organization, setting a benchmark for the quality of products, services and documentation. It standardizes the way the business is run. Processes will be written, documents will be organized and the basic functions will be streamlined, allowing a change of employees or management with fewer detrimental effects to overall operations.

## Focus on Customer Service

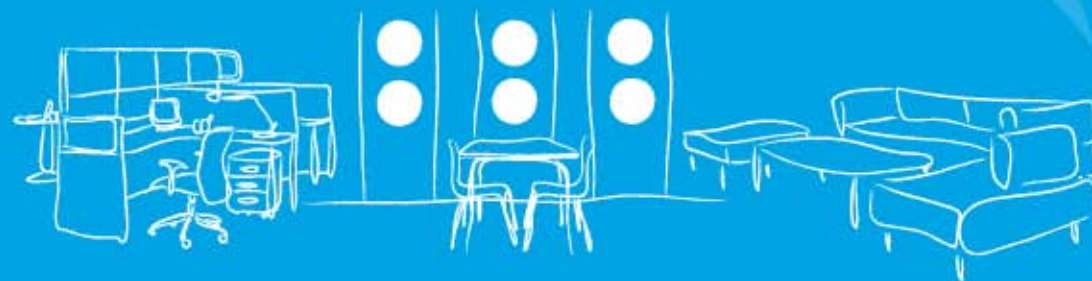
Part of the ISO 9001 management system, is a standardization for customer service and the way customer requirements are met. Methods for measuring and tracking customer satisfaction are also part of the ISO 9001 system.

The systematic ISO 14001:2004 approach requires the organization to critically assess areas where its activities have an environmental impact. This can lead to benefits such as:

- reduced cost of waste management
- savings in consumption of energy and materials
- lower distribution costs
- improved corporate image among regulators, customers and the public
- framework for continual improvement of environmental performance.

We believe that these accreditations enhance sustainable business practices for the long term.





T. (971) 4 432 7294

F. (971) 4 432 7293

E. [info@innov8group.ae](mailto:info@innov8group.ae)

PO BOX 450567, Dubai, United Arab Emirates

**Toll Free.** 800 INNOV8 (800 466688)